

# Multi-use IP intercom with video calls



## FEATURES

- Electronic SIP voice communicator
- Opening of doors via any VoIP communicator
- Perfect integration with Asterisk®
- Door open sensor
- Standard brushed steel, single color
- Day and night display mode

## APPLICATIONS

- Integrated electronic doorman via VoIP
- IP wall communicator for communication between environments via hand-free SIP calling
- Automated control for operating devices
- Intercom for security systems
- Access control point for security system

## Overview

The IP Wall is a line IP communicators with onboard intelligence. Has an efficient hands-free voice feature, option for RFID reader, integrated video camera option and license to use external video camera, in addition to having the option to use in PoE networks. It can be used as an electronic door phone, IP wall phone, an intercom system for security or automation and even as an access control point. The IP Wall products can also be used in homes, offices, multifamily systems in closed buildings and condominiums, schools, intercom totems, parking lot gates, hospitals and many other environments.

Connecting like an SIP extension of a PABX IP or directly to another remote IP device, the products of the IP Wall line can be installed in either a local or remote network. Configuration is done through a web server that is accessible with any standard browser.

In versions with the integrated RFID reader, you get the advantage of having the entire reader and intercom structure in a single device, providing easy and practical installation and a cleaner environment with modern design.

Versions with integrated video camera enable videoconferencing with the customized structure in a single device, aiding in the installation of the system and assigning a current technological interface.

With all of these options, the IP Wall is an important tool in a variety of scenarios involving integration via SIP, including in its wide range of integration possibilities for IoT requisitions.

## Models

Available models are:

- **IP Wall 301 S** - Wall mount with 1 programmable key
- **IP Wall 312 S** - Wall mount with numeric keyboard

## Optional resources\*

The optional features available are:

- **C** - Integrated video camera
- **P** - Power over Ethernet (PoE 802.3af)
- **R** - Integrated RFID 125KHz or 13,56MHz
- **V** - Video license

\* You can not use the C and R options together on IP Wall 312 models.

## Technical specifications

### Functionalities

- Door opening by DTMF remote order command or SIP Notify
- Two Wiegand communication interfaces for connection with RFID readers
- Two dry contact relays for access control, allowing access from any PABX extension
- Separate controls for microphone and speaker volume
- LAN/PABX-IP SIP integration with internal Web server for configuration
- Free standing, SIP access control using SQL data base
- Perfect integration with Asterisk®
- Door open sensor
- Use on Power over Ethernet (PoE) networks with optional license
- Support for video calls

### For installations with numeric keyboard

- Dialing of numbers, permitting direct calls to the destination or accessing special resources on the PBX IP
- Programming of passwords for access control

### Technical characteristics IP Wall board

- Audio Codec supported: G.711 A-law and U-law
- Video Codec supported: H.264
- VoIP Protocols used: SIP and RTP
- Access control with Wiegand protocol support
- DTMF detection and generation (RFC 2833 standard)
- Audio output power: 2 W

*The IP Wall Board is an integral part of the IP Wall communicator as well as the IP Wall Kit.*

### Physical characteristics

- Resistant to rain and water droplets (degree of protection: IP Code 66)
- Maximum operating temperature: 50 ° C
- Power source: 12 VDC / 1 A
- Relay outputs: 125 VAC / 20 A - 220 VAC / 10 A - 14 VDC / 20 A
- Model for wall mounting
- Dimensions: 118 x 204 x 35 mm

### Warranties and certifications

- Full warranty (legal + Khomp warranty): 1 year
  - Legal guarantee: 90 days
  - Khomp warranty: 9 months
- ISO 9001 certified industry

## Integrated camera technical specifications

### Mechanical characteristics of integrated IP camera

- Dimensions (WxHxD): 38x38x15 mm
- Weight: 12 g
- Operating temperature: -30 °C to + 70 °C
- Operating Relative Humidity: 10% to 95%

### Network settings

- DHCP
- Static IP

### Date/time settings

- NTP (Network Time Protocol)
- Daylight saving time

### Electrical characteristics of integrated IP camera

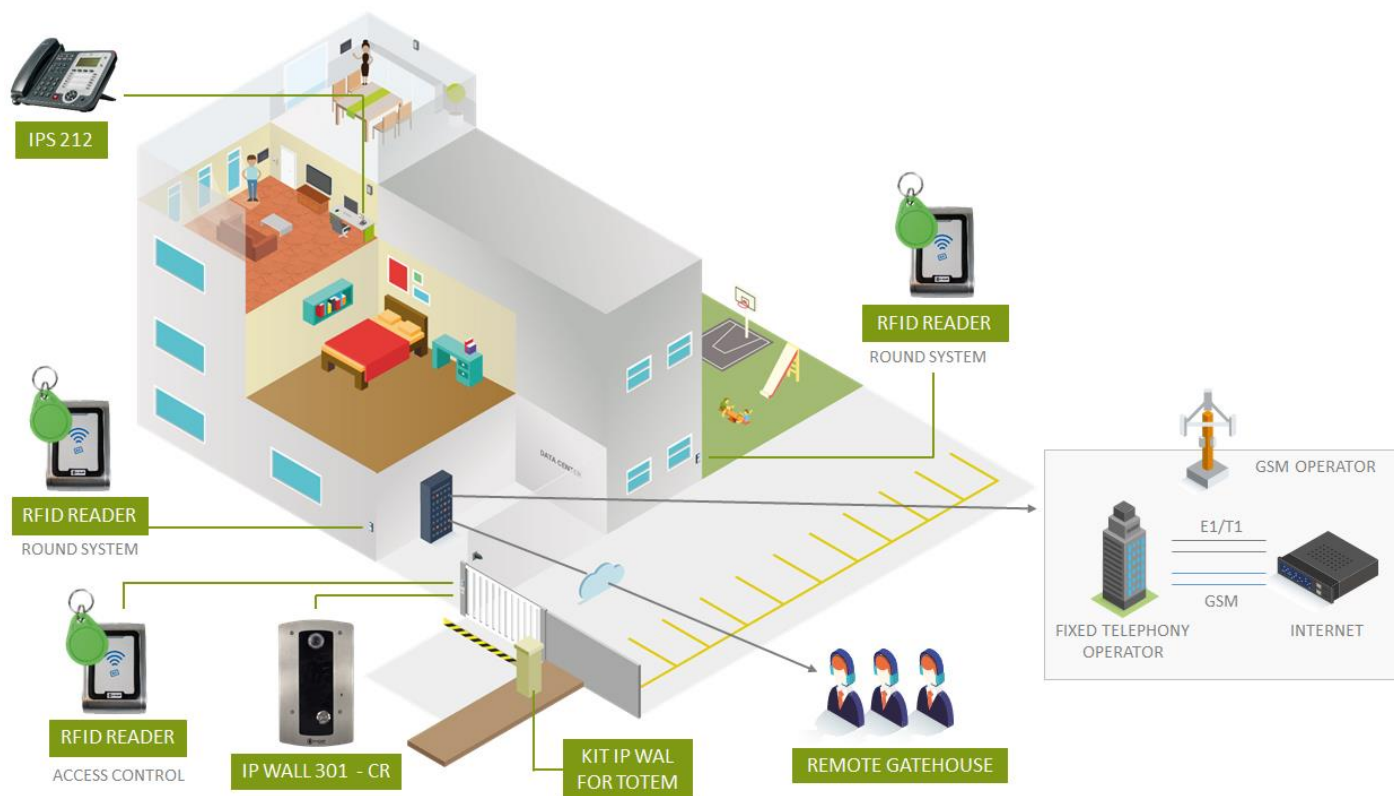
- Maximum power consumption: 3 W
- Voltage: DC 12 V
- Surge protection

## Features of integrated IP camera

- 960p or 720p resolution
- JPEG image capture
- 1/3 "image sensor, 1.3 MP
- CMOS Progressive Scan (AR0130)
- Supported video codec: H.264
- Support for RTSP and ONVIF
- Motion Detection
- Privacy Mask: 4 programmable areas
- Languages: Portuguese, Spanish and English
- Focal length of 2.1 mm  $\pm$  5%
- Back Focal Length (BFL) of 3.79 mm (include 0.8 mm IRCUT & Cover Glass)

- 3.5 mm Focal Distance Flange (FFD) (include 0.8 mm IR-CUT & Cover Glass)
- Image circle of  $\Phi$  6.3 mm
- Focal range from 0.2 m
- Varifocal lens
- Image Adjustment: brightness, contrast, saturation, backlight control and sharpness
- Blank balance
- Mirror function: vertical and horizontal rotation
- Automatic Day / Night
- Wide Dynamic Range (WDR)

## Model of integrated application for the Khomp Endpoints SIP line



ENABLING TECHNOLOGY

### Contact us



+55 (48) 3722.2900



comercial@khomp.com

Rua Joe Collaço 253, Florianópolis  
CEP 88037-010 – Santa Catarina, Brazil