

# IP intercom with video calls



## Main features

- Electronic SIP voice communicator
- Opening of doors via any VoIP communicator
- Perfect integration with Asterisk®
- Door open sensor
- Day and night view mode
- Waterproof (IP Code 66)
- Khomp's IP gatekeepers use the User Datagram Protocol (UDP) to send and receive information

## Applications

- Integrated electronic doorman via VoIP
- IP Wall communicator for communication between environments via hand-free SIP calling
- Automated control for operating devices
- Intercom for security systems
- Access control point for security system

## Optional resources

- **P** → Power over Ethernet (POE 802.3af)
- **V** → Video license
- **B** → Keypass (Bluetooth™)

## Overview

The IP Wall is IP communicators with onboard intelligence. It has an efficient speakerphone and video license for use of external camera, besides having the option to use in PoE networks. It can be used as an electronic door phone (used in homes, offices, multifamily systems in closed buildings and condominiums, schools, intercom totems, parking IoT gates, hospitals and many other environments), IP Wall phone, intercom in security systems or automation, as well as access control point.

Connecting like an SIP extension of a PBX IP local or directly to another remote IP device. Configuration is Web server that is accessible with any standard browser.

**Provides an easy and practical installation, and a cleaner environment with a modern design.**

Versions with integrated video camera enable videoconferencing with the customized structure in a single device, aiding in the installation of the system and assigning a current technological interface.

With all of these options, the IP Wall is an important tool in a variety of scenarios involving integration via SIP, including in its wide range of integration possibilities for IoT requisitions.

## Models

- **IP Wall 301 S** → modelo sobrepor com tecla programável.
- **IP Wall 312 S \*** → superimposed model with programmable key.

\* You can not use the C and R options together on IP Wall 312 models.

## Technical characteristics

### Functionalities

- Door opening by DTMF remote order command or SIP Notify
- 2 Wiegand communication interfaces for connection with RFID readers
- 2 dry contact relays for access control, allowing access from any PBX extension
- Separate controls for microphone and speaker volume
- LAN/PBX-IP SIP integration with internal Web server for configuration
- Free standing, SIP access control using SQL data base
- Perfect integration with Asterisk®
- Door open sensor
- Door opening by smartphone\*\* via Bluetooth™
- Supports video calls\*\*\* (See list of compatible cameras. Video support enabled through optional license)

\*\* To use this function, the IP Wall must be equipped with **B** - Keypass (Bluetooth™). This optional item adds value to the product.

### \*\*\* Compatible cameras

- **Grandstream** GXV3611\_HD; GXV3672\_HD\_36; GXV3601\_HD
- **Vivotek** IP-8161
- **TP-Link** TL-SC3430

### Technical characteristics IP Wall board \*\*\*\*

- Audio Codec supported: G.711 A-law and U-law
- Video Codec supported: H.264
- VoIP Protocols used: SIP and RTP
- Access control with Wiegand protocol support
- DTMF detection and generation (RFC 2833 standard)
- Audio output power: 2 W
- Wiegand output 26 bits 6 wires
- Maximum distance of 100 m of IP Wall product

\*\*\*\* The IP Wall Board is an integral part of the IP Wall communicator as well as the IP Wall Kit.

### Physical characteristics

- Resistant to rain and water droplets (degree of protection: IP Code 66)
- Maximum operating temperature: 50 ° C
- Power source: 12 VDC / 1 A
- Relay outputs:
  - 20 A / 125 VAC
  - 10 A / 220 VAC
  - 20 A / 14 VDC
- Model for wall mounting
- Dimensions: 4.64"x8.03"x1.37"

### Guarantees and certifications

- Total warranty (legal + Khomp warranty): 1 year
  - Legal warranty: 90 days
  - Khomp warranty: 9 months
- ISO 9001 certified industry

# Integrated IP Camera

NST-G3H is a 3MP (3 megapixels) HD low-illumination AI smart IP camera module, 3MP imaging, low noise, dual color light, enhanced night vision, clearer faces, support human detection, support H.265AI encoding, mainly used in night vision HD video surveillance camera.

## Integrated IP Camera Technical Specifications

### Main Features

- CMOS
- H.265AI (H.264), H.265
- 3MP (2048x1536 pixels)
- Lightning protection
- RTSP
- ONVIF
- Auto ICR

### Module

- Sensor: 1/2.9" low-illumination CMOS sensor, color 0.01Lux@F1.2, black/white 0.001Lux@F1.2
- Video compression: H.265AI (H.265/H.264 compatible), dual-stream support, AVI; 0.1M up to 10Mbps variable; 1–30 f/s variable
- Image output: Main stream: 2304\*1296@20fps, 1920\*1080@20fps; sub-stream: 800\*448@25fps;
- Shutter: 1/50(1/60)s at 10fps 1/10,000s
- Lens:
- Horizontal aperture angle: 137.37°
- Vertical aperture angle: 80°
- Day and night: Support IR-CUT.

### Image

- Noise reduction: Support 2D/3D
- Wide dynamic: Support digital

### General specifications

- Reliability: Comprehensive lightning protection, 7\*24 hours -10°C to +65°C high temperature test stable and reliable
- Power: DC 12V/2A input, power consumption: ≤3W
- Dimension: 38x38mm
- Other: Support POE power supply

## Product images

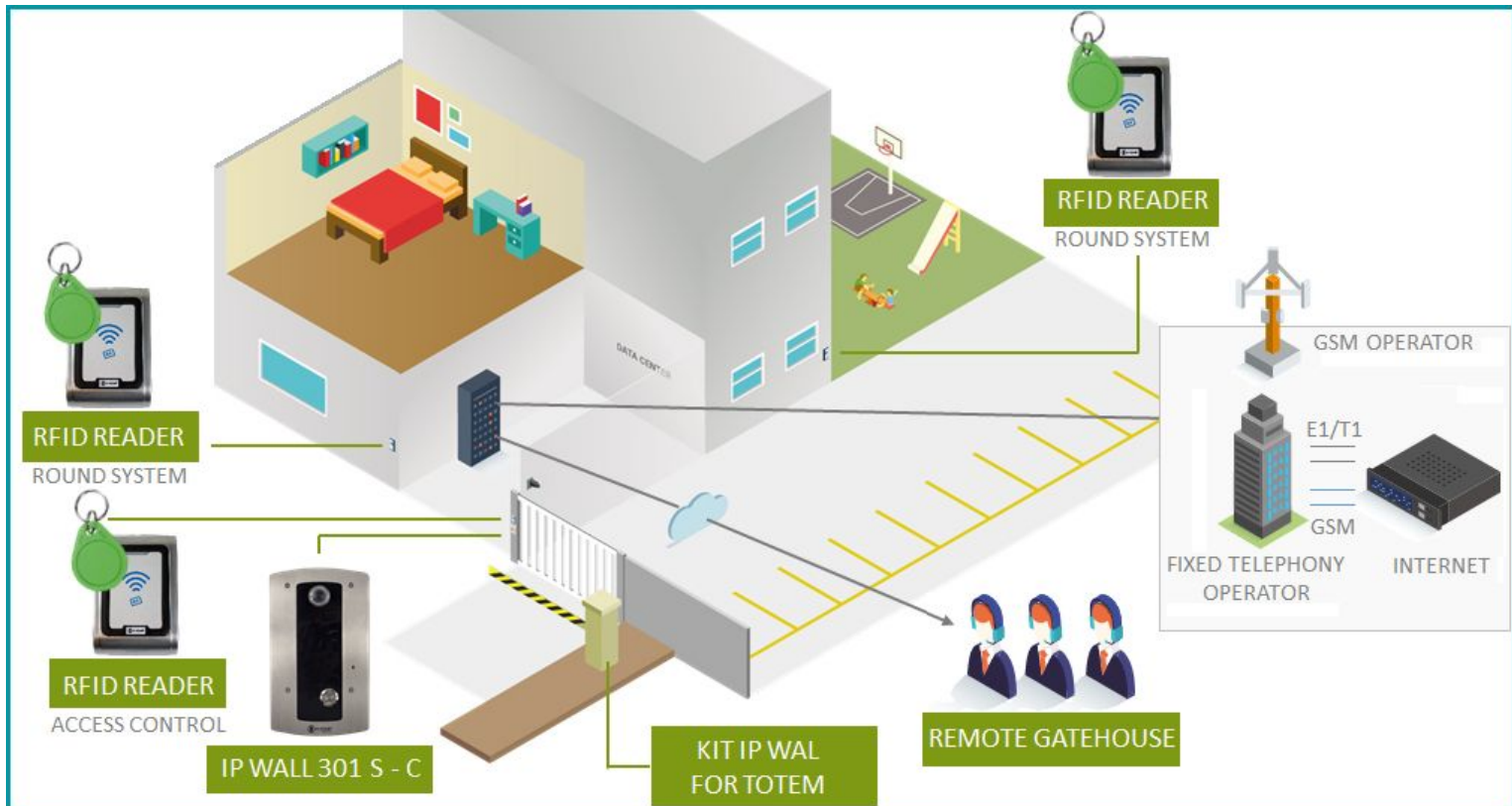


**Subtitle:** Front of the IP Wall 301 S, IP Wall 301 SR and IP Wall 312 S models.



**Subtitle:** Side view of the IP Wall 301 S and IP Wall 312 S models (respectively).

## Model of application



**Subtitle:** Corporate environment with automated local concierge.