

Multiuse IP intercom



Main features

- Electronic SIP voice communicator
- Opening of doors via any VoIP communicator
- Perfect integration with Asterisk®
- Door open sensor
- Possibility of integrated RFID reader with wiegand
- 2 wiegand communication interfaces for connecting RFID readers
- 2 dry contact relays for access control, allowing access under any extension of the PBX
- Waterproof (IP Code 66)
- Khomp's IP gatekeepers use the User Datagram Protocol (UDP) to send and receive information

Applications

- Integrated electronic doorman via VoIP
- IP Wall communicator for communication between environments via hand-free SIP calling
- Automated control for operating devices
- Intercom for security systems
- Access control point for security system

Optional resources

- **P** - Power over Ethernet (POE 802.3af)
- **V** - Video license
- **R** - RFID reader: 13,56 MHz or 125 KHz (optional frequency)

Overview

The IP Wall is IP communicators with onboard intelligence. It has an efficient speakerphone, option for RFID reader and video license for use of external camera, besides having the option to use in PoE networks. It can be used as an electronic door phone (used in homes, offices, multifamily systems in closed buildings and condominiums, schools, intercom totems, parking IoT gates, hospitals and many other environments), IP Wall phone, intercom in security systems or automation, as well as access control point.

Connecting like an SIP extension of a PBX IP local or directly to another remote IP device. Configuration is Web server that is accessible with any standard browser.

In the version with the integrated RFID reader, you get the advantage of having the entire reader and intercom structure in a single device, providing an easier and more practical installation.

With all of these options, the IP Wall is an important tool in a variety of scenarios involving integration via SIP, including in its wide range of integration possibilities for IoT requisitions.

Models

- **IP Wall 201 DG** (Dark Grey)
- **IP Wall 201 BC** (Bicolor)
- **IP Wall 201 LG** (Light Grey)

Technical characteristics

Functionalities

- Door opening by DTMF remote order command or SIP Notify
- 2 Wiegand communication interfaces for connection with RFID readers
- 2 dry contact relays for access control, allowing access from any PBX extension
- Separate controls for microphone and speaker volume
- LAN/PBX-IP SIP integration with internal Web server for configuration
- Free standing, SIP access control using SQL data base
- Perfect integration with Asterisk®
- RFID support
- Door open sensor
- Supports video calls* (See list of compatible cameras. Video support enabled through optional license)

* Compatible cameras

- **Grandstream** GXV3611_HD; GXV3672_HD_36; GXV3601_HD
- **Vivotek** IP-8161
- **TP-Link** TL-SC3430

RFID reader characteristics

- Operating Frequency: 13.56 Mhz or 125KHz (optional frequency)

Technical characteristics IP Wall board **

- Audio Codec supported: G.711 A-law and U-law
- Video Codec supported: H.264
- VoIP Protocols used: SIP and RTP
- Access control with Wiegand protocol support
- DTMF detection and generation (RFC 2833 standard)
- Audio output power: 2 W
- Wiegand output 26 bits 6 wires
- 1 to 5 cm Identification Distance
- Maximum distance of 100 m of IP Wall product

** *The IP Wall Board is an integral part of the IP Wall communicator as well as the IP Wall Kit.*

Physical characteristics

- Resistant to rain and water droplets (degree of protection: IP Code 66)
- Maximum operating temperature: 50 ° C
- Power source: 12 VDC / 1 A
- Relay outputs:
 - 20 A / 125 VAC
 - 10 A / 220 VAC
 - 20 A / 14 VDC
- Model for wall mounting
- Dimensions: 4.64"x8.03"x1.37"

Guarantees and certifications

- Total warranty (legal + Khomp warranty): 1 year
 - Legal warranty: 90 days
 - Khomp warranty: 9 months
- ISO 9001 certified industry

Product images

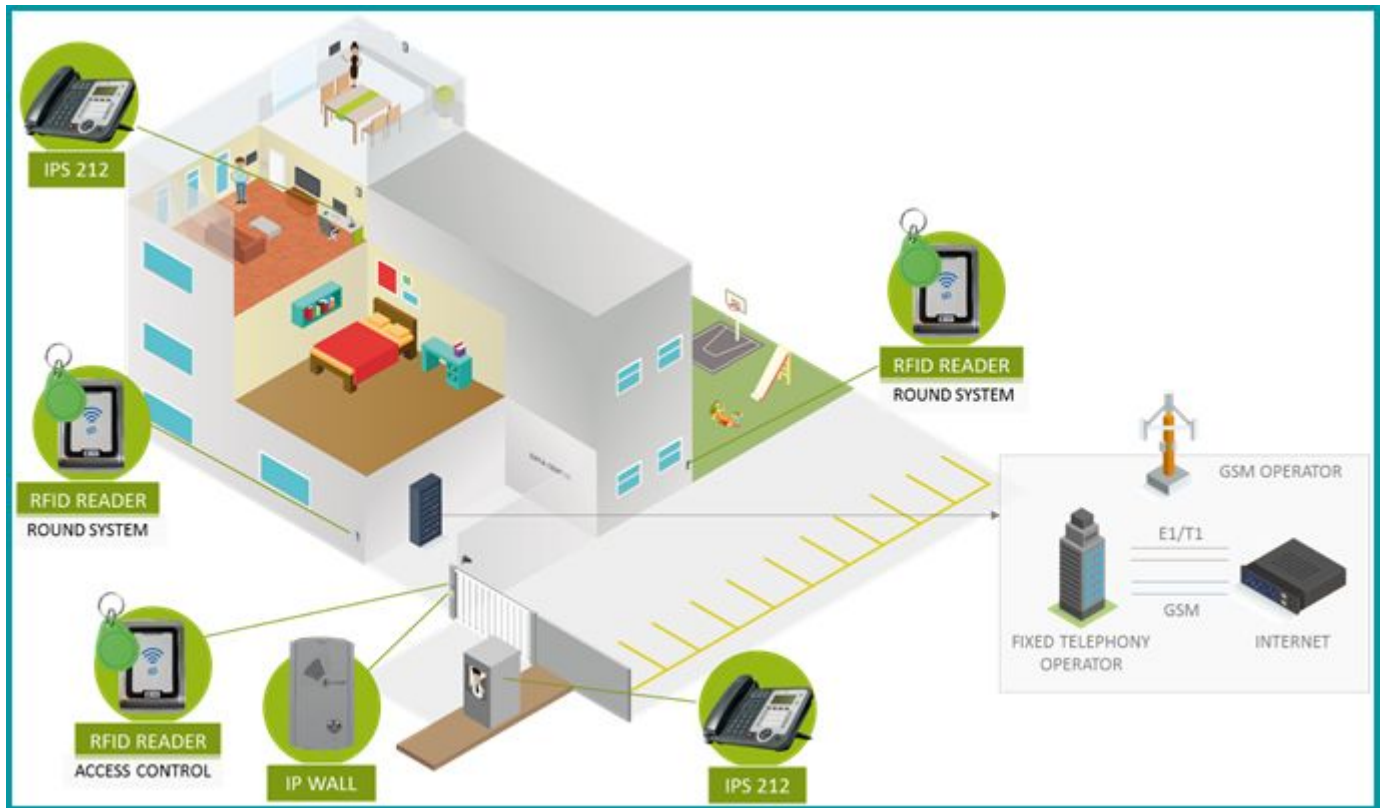


Subtitle: Model IP Wall 201 BC - R (with RFID reader).



Subtitle: Model IP Wall 201 BC (double sided).

Model of application



Subtitle: *Condominium Environment. Automation with local gatehouse.*