

Multiuse IP intercom



Main features

- Electronic SIP voice communicator
- Opening of doors via any VoIP communicator
- Smartphone access control via Bluetooth™
- Perfect integration with Asterisk®
- Door open sensor
- Possibility of integrated RFID reader 13,56 Mhz
- 2 dry contact relays for access control and drives
- Waterproof (IP Code 66)

Applications

- Integrated electronic doorman via VoIP
- IP Wall communicator for communication between environments via hand-free SIP calling
- Automated control for operating devices
- Intercom for security systems
- Access control point for security system

Optional resources

- **P** - Power over Ethernet (POE 802.3af)
- **V** - Video license
- **R** - RFID reader 13,56 MHz or 125 KHz (optional frequency)
- **B** - Keypass (Bluetooth™)

Overview

The IP Wall is IP communicators with onboard intelligence. It has an efficient speakerphone, option for RFID reader and video license for use of external camera, besides having the option to use in PoE networks. It can be used as an electronic door phone (used in homes, offices, multifamily systems in closed buildings and condominiums, schools, intercom totems, parking IoT gates, hospitals and many other environments), IP Wall phone, intercom in security systems or automation, as well as access control point.

Connecting like an SIP extension of a PBX IP local or directly to another remote IP device. Configuration is Web server that is accessible with any standard browser.

Models

- **IP Wall 201 DG** (Dark Grey)
- **IP Wall 201 BC** (Bicolor)
- **IP Wall 201 LG** (Light Grey)

Technical characteristics

Functionalities

- Door opening by DTMF remote order command or SIP Notify
- 2 Wiegand communication interfaces for connection with RFID readers
- 2 dry contact relays for access control and drives
- Separate controls for microphone and speaker volume
- LAN/PBX-IP SIP integration with internal Web server for configuration
- Free standing, SIP access control using SQL data base
- Perfect integration with Asterisk®
- RFID support
- Use on PoE (Power over Ethernet) networks under optional license that can be purchased only when purchasing the product
- Door open sensor
- Door opening by smartphone* via Bluetooth™
- Supports video calls** (See list of compatible cameras. Video support enabled through optional license)

* To use this function, the IP Wall must be equipped with **B** - Keypass (Bluetooth™).

** Refer to the [IP Wall Manual](#) for a list of approved cameras

RFID reader characteristics

- Operating Frequency: 13.56 Mhz

Technical characteristics IP Wall board ***

- Audio Codec supported: G.711 A-law and U-law
- Video Codec supported: H.264
- VoIP Protocols used: SIP and RTP
- Access control with Wiegand protocol support
- DTMF detection and generation (RFC 2833 standard)
- Audio output power: 2 W
- Wiegand output 26 bits 6 wires
- 1 to 5 cm Identification Distance
- Maximum distance of 100 m of IP Wall product

*** The IP Wall Board is an integral part of the IP Wall communicator as well as the IP Wall Kit.

Physical characteristics

- Resistant to rain and water droplets (degree of protection: IP Code 66)
- Maximum operating temperature: 50 ° C
- Model for wall mounting
- Dimensions: 4.64"x8.03"x1.37"
- Power source: 12 VDC / 1 A
- Relay nominal load****:

 - 20 A / 125 VAC
 - 10 A / 220 VAC
 - 20 A / 14 VDC

**** The relays do not supply power.

Guarantees and certifications

- Total warranty (legal + Khomp warranty): 1 year
 - Legal warranty: 90 days
 - Khomp warranty: 9 months
- ISO 9001 certified industry

Product images

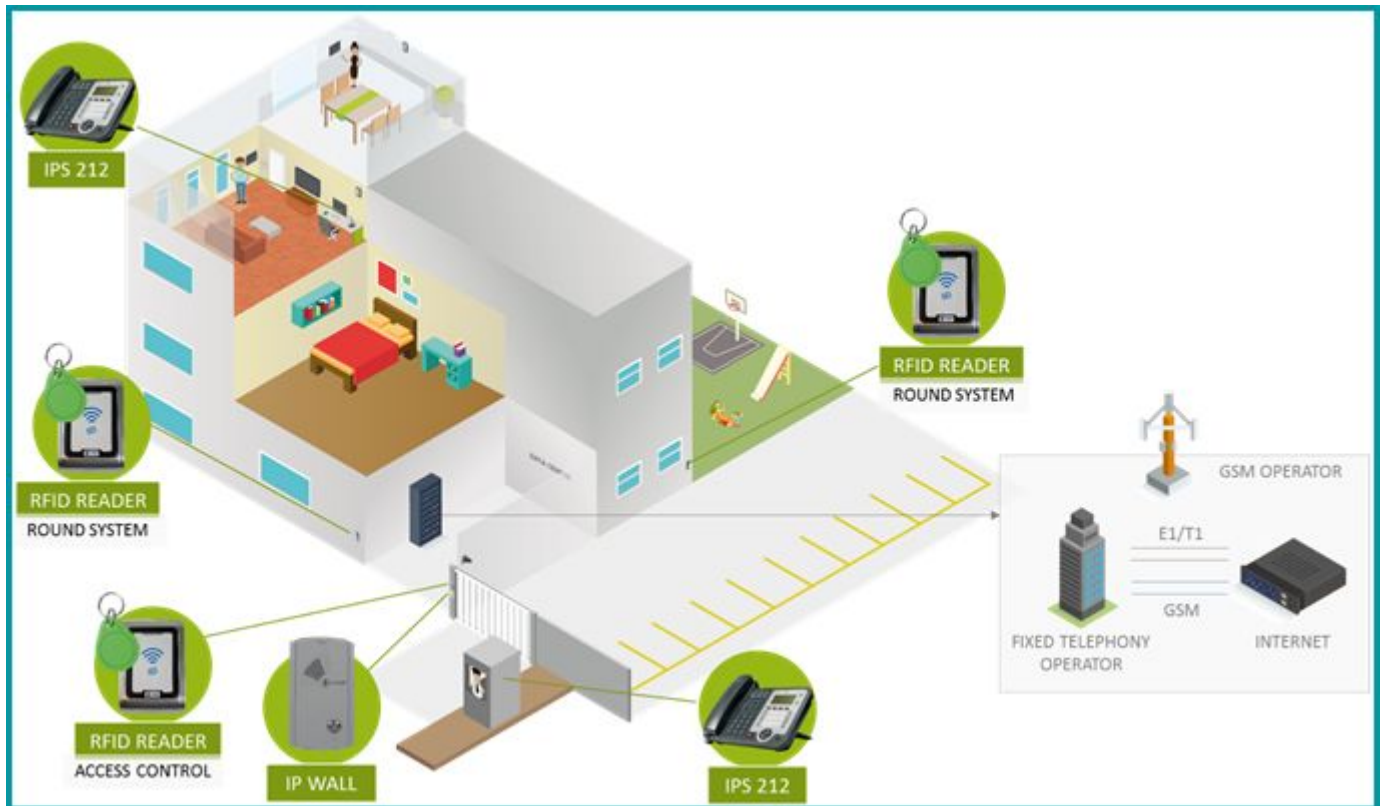


Subtitle: Model IP Wall 201 BC - R (with RFID reader).



Subtitle: Model IP Wall 201 BC (double sided).

Model of application



Subtitle: Condominium Environment. Automation with local gatehouse.