

Multi-use IP intercom

FEATURES

- Electronic SIP voice communicator
- Opening of doors via any VoIP communicator
- Perfect integration with Asterisk®
- Door open sensor
- Standard brushed steel, single color



APPLICATIONS

- Integrated electronic doorman via VoIP
- IP wall communicator for communication between environments via hand-free SIP calling
- Automated control for operating devices
- Intercom for security systems
- Access control point for security system

Overview

The IP Wall is a line IP communicators with onboard intelligence. Has an efficient hands-free voice feature, option for RFID reader, integrated video camera option and license to use external video camera, in addition to having the option to use in PoE networks. It can be used as an electronic door phone, IP wall phone, an intercom system for security or automation and even as an access control point. The IP Wall products can also be used in homes, offices, multifamily systems in closed buildings and condominiums, schools, intercom totems, parking lot gates, hospitals and many other environments.

Connecting like an SIP extension of a PABX IP or directly to another remote IP device, the products of the IP

Wall line can be installed in either a local or remote network. Configuration is done through a web server that is accessible with any standard browser.

In versions with the integrated RFID reader, you get the advantage of having the entire reader and intercom structure in a single device, providing easy and practical installation and a cleaner environment with modern design.

With all of these options, the IP Wall is an important tool in a variety of scenarios involving integration via SIP, including in its wide range of integration possibilities for IoT requisitions.

Models

Available models are:

- **IP Wall 301 S** - Wall mount with 1 programmable key
- **IP Wall 312 S** - Wall mount with numeric keyboard

Optional resources

The optional features available are:

- **P** - Power over Ethernet (PoE 802.3af)
- **R** - Integrated RFID 125KHz or 13,56MHz
- **V** - Video license

Technical specifications

Functionalities

- Door opening by DTMF remote order command or SIP Notify
- Two Wiegand communication interfaces for connection with RFID readers
- Two dry contact relays for access control, allowing access from any PABX extension
- Separate controls for microphone and speaker volume
- LAN/PABX-IP SIP integration with internal Web server for configuration
- Free standing, SIP access control using SQL data base
- Perfect integration with Asterisk®
- Door open sensor
- Use on Power over Ethernet (PoE) networks with optional license
- Support for video calls * (see list of approved cameras). Video support enabled on models with built-in camera or by optional license

* Compatible cameras:

- Grandstream GXV3611HD; GXV3672HD 36; GXV-3601HD
- Vivotek IP-8161
- TP-Link TL-SC3430

For installations with numeric keyboard

- Dialing of numbers, permitting direct calls to the destination or accessing special resources on the PBX IP
- Programming of passwords for access control

Technical characteristics IP Wall board**

- Audio Codec supported: G.711 A-law and U-law
- Video Codec supported: H.264
- VoIP Protocols used: SIP and RTP
- Access control with Wiegand protocol support
- DTMF detection and generation (RFC 2833 standard)
- Audio output power: 2 W

** *The IP Wall Board is an integral part of the IP Wall communicator as well as the IP Wall Kit.*

Physical characteristics

- Resistant to rain and water droplets (degree of protection: IP Code 66)
- Maximum operating temperature: 50 ° C
- Power source: 12 VDC / 1 A
- Relay outputs: 125 VAC / 20 A - 220 VAC / 10 A - 14 VDC / 20 A
- Model for wall mounting
- Dimensions: 118 x 204 x 35 mm

Warranties and certifications

- Full warranty (legal + Khomp warranty): 1 year
 - Legal guarantee: 90 days
 - Khomp warranty: 9 months
- ISO 9001 certified industry

Product images



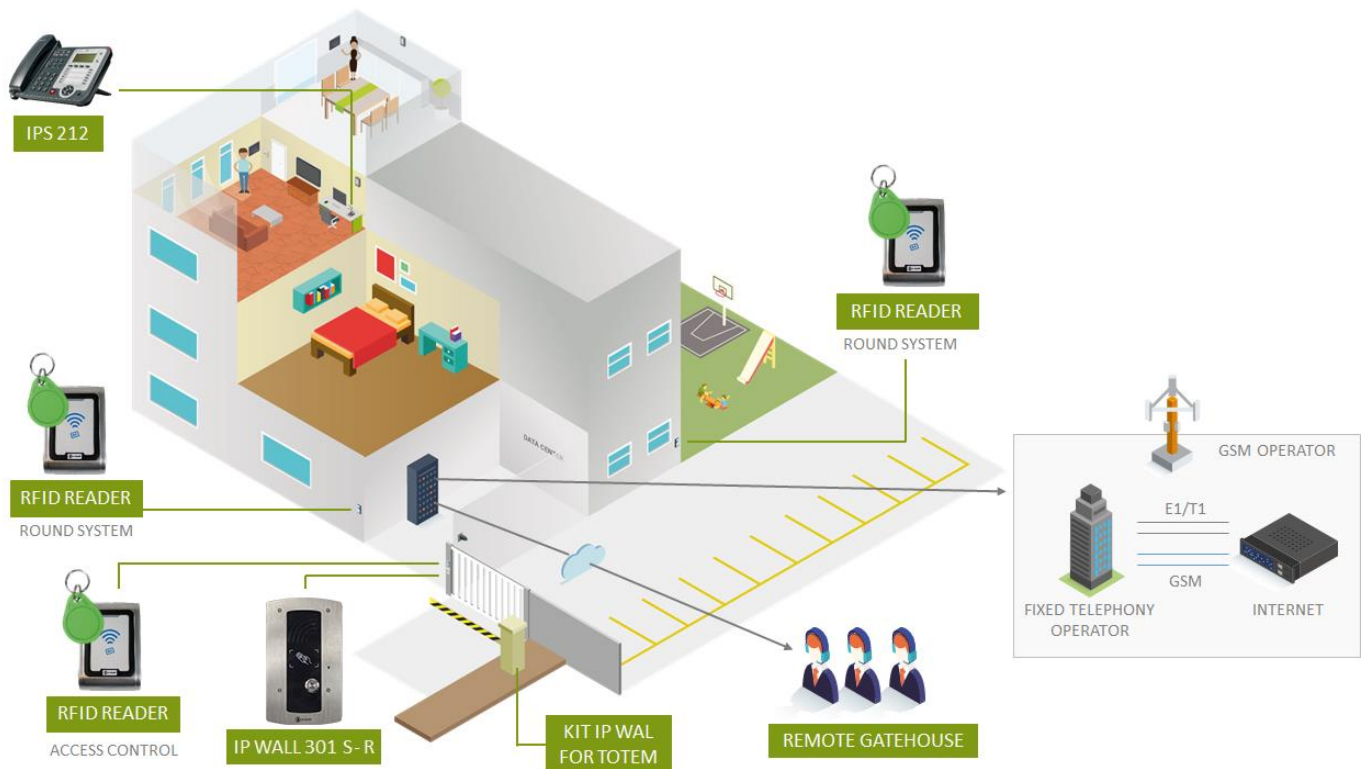
IP Wall 301 S

IP Wall 301 S - R

IP Wall 312 S

IP Wall 312 S - R

Model of integrated application for the Khomp Endpoints SIP line



ENABLING TECHNOLOGY

Contact us

+55 (48) 3722.2900

comercial@khomp.com

Rua Joe Collaço 253, Florianópolis
CEP 88037-010 – Santa Catarina, Brazil